

EVERYMAN

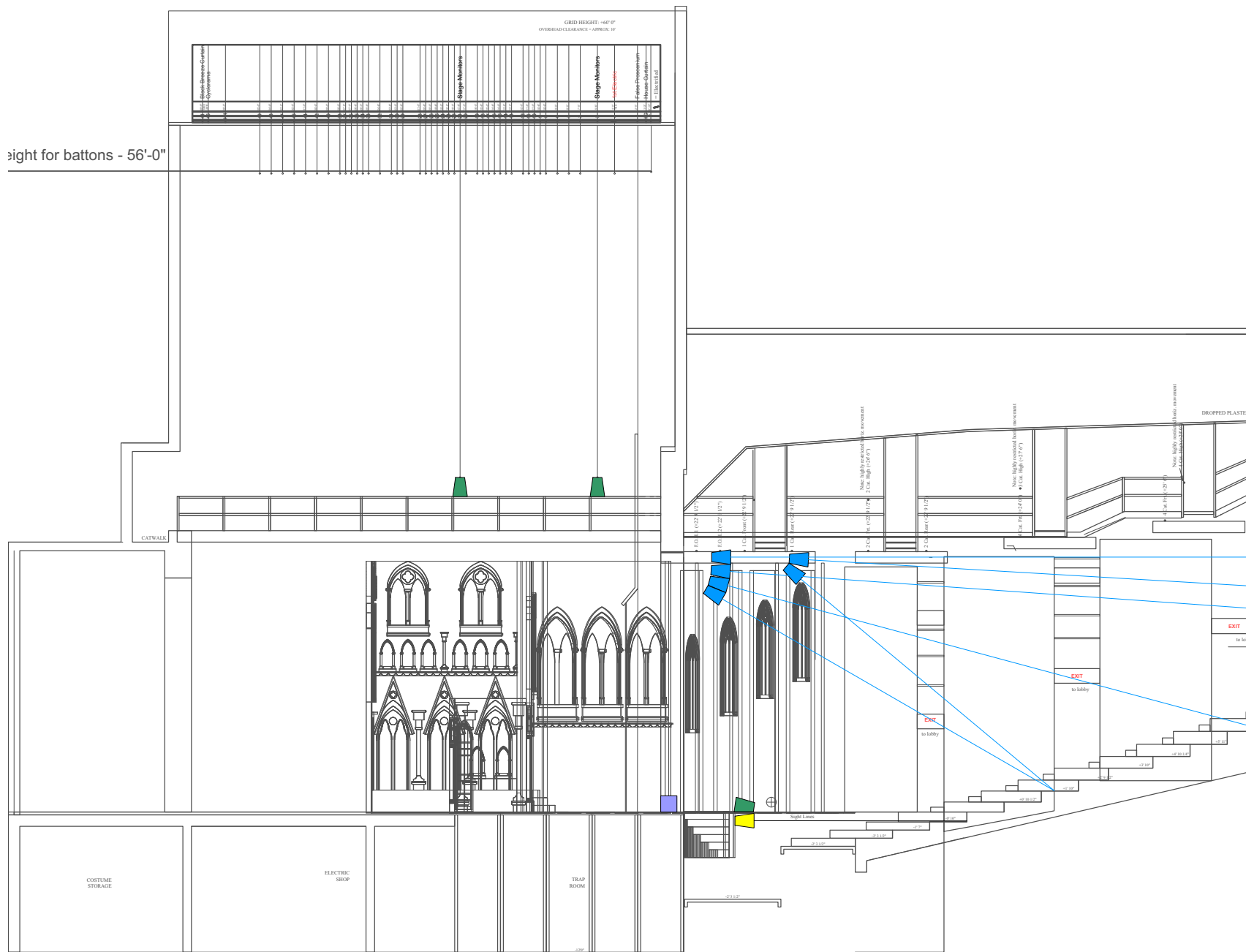
Tate Thompson
Sound Design



EVERYMAN by Anonymous
 Sound Design by Tate E. Thompson

Cue Sheet
Updated: 2/18/21

Cue	Scene	Pg.	Description	Start	Fade	Notes
1	1	1	Curtain Announcement	on SM Go	All cues end on their own.	
4	1	1	God Entrance	after MESSENGER: Give audience and hear what He doth say.		
8	3	4	(Don't Fear) The Reaper	after DEATH: That all to me should be obedient.		
12	4	6	I'll Be There for You	after FELLOWSHIP: In the way of good company.		
16	5	10	We Are Family	after KINDRED: For over his kin a man may be bold.		
20	6	12	Material Girl	after EVERYMAN: Where art thou, my Goods and Riches?		
24	6	15	GOODS Exit Music	after GOODS: Therefore farewell, and have a good day.		
28	7	17	Carry On My Wayward Son	after KNOWLEDGE: To Confession, that cleansing river.		
32	8	18	S&M	after EVERYMAN: Though the knots be painful and hard within.		
36	9	20	Like A Prayer	after GOOD DEEDS: His good works I will help him to declare.		
40	10	22	Entrance Music	as DISCRETION, STRENGTH, FIVE WITS, and BEAUTY enter		
44	10	25	Goodbye Yellow Brick Road	after KNOWLEDGE: As ever I was by Judas Maccabee.		
48	11	29	Heaven	after THE ANGEL: Who live well, after the day of doom.		



LEGEND		
	d&b V12 SL SR Arrays (4 per) Center (2)	10
	d&b Y10P Front Fills	5
	d&b E5 Stage Monitors	5
	d&b V-SUB Subwoofers	2

NOTES
1) Line 2 and Line 21 monitors are downfiring and are hung as low as possible out of sightlines.

DISCLAIMER
THIS DOCUMENT REPRESENTS THE ARTISTIC IDEAS OF THE SOUND DESIGNER. THE SOUND DESIGNER IS NOT RESPONSIBLE FOR THE APPROPRIATE RIGGING AND SAFE ELECTRICAL INSTALLATION OF THE SOUND EQUIPMENT. TECHNOLOGY QUESTIONS OR CONCERNS, PLEASE CONTACT TATE THOMPSON AT 304.699.7154.

Everyman

1714 Andy Holt Ave,
Knoxville, TN
37916

Scenic Designer: DJ Pike

Lighting Designer: Kaylin Gess

Costume Designer: M. Hromek

Sound Designer: Tate E. Thompson

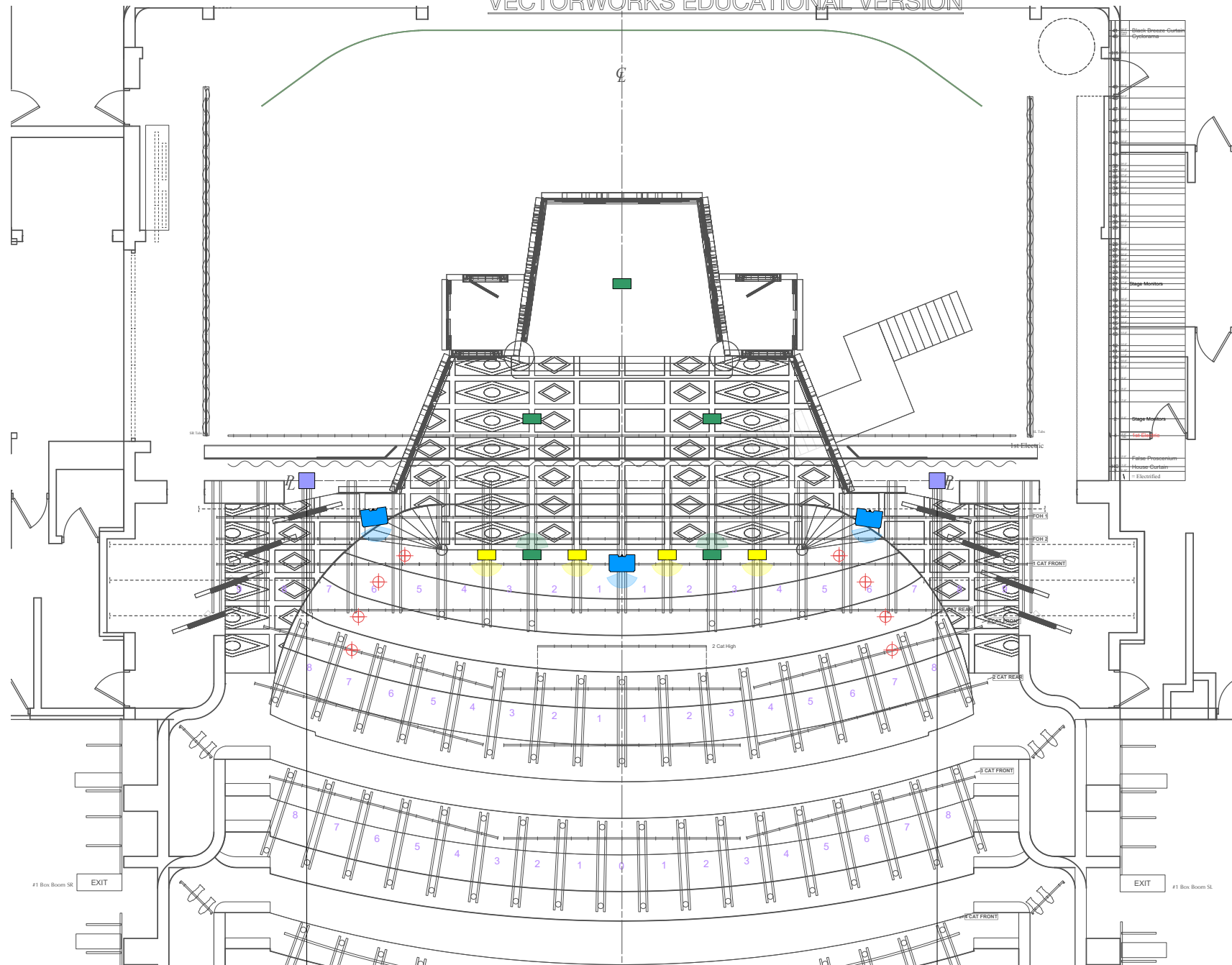
Revisions:	Date & Time:
1	02/13/21 18:12
2	02/18/21 19:12

SR Section





Scale : 1/4" = 1"
Date : 2/13/21

1 OF 3

304.699.7154
tate Thom@vols.utk.edu
tateaudio.com



LEGEND

	d&b V12 SL, SR Arrays (4 per) Center (2)	10
	d&b Y10P Front Fills	4
	d&b V-SUB Subwoofers	2
	d&b E5 Stage Monitors	5

NOTES

1) Line 2 and Line 21 monitors are downfiring and are hung as low as possible out of sightlines.

DISCLAIMER

THIS DOCUMENT REPRESENTS THE ARTISTIC IDEAS OF THE SOUND DESIGNER.
THE SOUND DESIGNER IS NOT RESPONSIBLE FOR THE APPROPRIATE RIGGING AND
SAFE ELECTRICAL INSTALLATION OF THE SOUND EQUIPMENT/TECHNOLOGY.
QUESTIONS OR CONCERNS, PLEASE CONTACT TATE THOMPSON AT 304-699-7154.

Everyman



1714 Andy Holt Ave,
Knoxville, TN
37916

Scenic Designer:	DJ Pike
Lighting Designer:	Kaylin Gess
Costume Designer:	M. Hromek
Sound Designer:	Tate E. Thompson

Revisions:	Date & Time:	
1	02/13/21	18:12
2	02/18/21	19:12

Groundplan

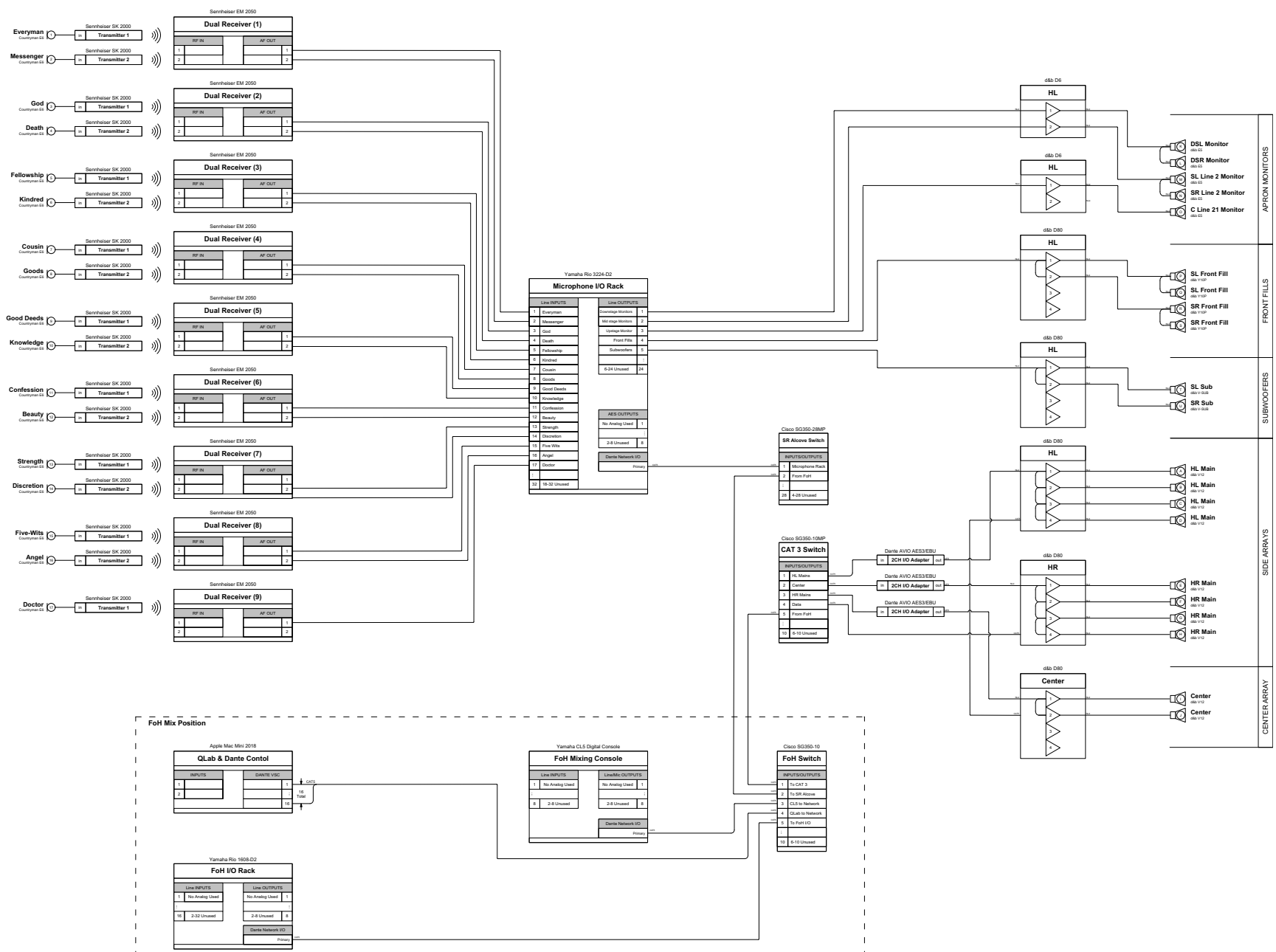
Scale : 1/4" = 1"
Date : 2/13/21

2 OF 3



TATE THOMPSON
SOUND DESIGNER

304.699.7154
tatethom@vols.utk.edu
tateaudio.com



LEGEND

NOTES

DISCLAIMER

THIS DOCUMENT REPRESENTS THE ARTISTIC IDEAS OF THE SOUND DESIGNER. THE SOUND DESIGNER IS NOT RESPONSIBLE FOR THE APPROPRIATE RIGGING AND SAFE ELECTRICAL INSTALLATION OF THE SOUND EQUIPMENT/TECHNOLOGY. QUESTIONS OR CONCERNS, PLEASE CONTACT TATE THOMPSON AT 304.699.7154.

Everyman



1714 Andy Holt Ave,
Knoxville, TN
37916

Scenic Designer: DJ Pike
Lighting Designer: Kaylin Gess
Costume Designer: M. Hromek
Sound Designer: Tate E. Thompson

Revisions:	Date & Time:
1	02/13/21 18:12
2	02/18/21 19:12

Block Diagram Scale : NTS
Date : 2/18/21

3 OF 3



304.699.7154
tate Thom@vols.utk.edu
tateaudio.com

Sources

✂

+

>>

A

Side Arrays

●

AP

●

GR

✂

✂

A

Center Array

○

AP

○

GR

✂

✂

P

Front Fill

○

GR

✂

S

Floor Sub Array

○

GR

✂

▼ Side Arrays

✂

🔍

System:

V-Series

▼

Mounting:

flown

▼

🔍

No. of cabinets:

4

Amplifier:

D80

▼

Position x:

3.00 ft

−

+

Position y:

22.00 ft

−

+

Frame height front (z):

22.50 ft

−

+

Hor. aiming:

8.00 °

−

+

Frame angle:

−8.00 °

−

+

Delay (abs.):

0.3 ms

−

+

ArrayProcessing

ArrayProcessing

🔍

AP slot:

1: Bypass

▼

TOPs

CUT

CPL:

0

−

+

Level (rel.)

−

+

Cabinets

Relative

−

+

	GR	Link	Speaker	Setup	Level dB	HFC	Splay	Abs.				
1	●	🔗	V12	▼	Arc	▼	4.0	−	▼	0.0 °	▼	−8.0 °
2	○	🔗	V12	▼	Arc	▼	4.0	−	▼	4.0 °	▼	−12.0 °
3	○	🔗	V12	▼	Arc	▼	−4.0	−	▼	8.0 °	▼	−20.0 °
4	○	🔗	V12	▼	Arc	▼	−4.0	−	▼	10.0 °	▼	−30.0 °

Live

A

B

C

Quad

📄

📁

Live (BB pink (linear), 0.0 dBu)

66ft

33ft

0ft (Y)

−33ft

−66ft

−49ft

−33ft

−16ft

0ft (X)

16ft

33ft

49ft

66ft

82ft

🔍

Top

End

Side

Iso

✕

Clear SPL

↔

Dispersion

Solid

X-Y-Z

SUB array is always calculated using complex SPL summation.
SPL mapping is shown at listener height.

Color

144dB

132dB

120dB

108dB

96dB

84dB

72dB

60dB

48dB

36dB

← Highest SPL

−

+

3

6

dB per division

Signal selection

Level (dBu):

0.0

−

+

Frequency:

Broadband Pink noise

▼

Weighting:

dB linear

▼

Interferences (<= 163 Hz)

SPL calculation

Resolution:

Mid (7ft)

▼

Highest SPL:

112.8 dB

100%

Autocalculate

Recalculate

Sources

+

>>

A

Side Arrays

APGR

A

Center Array

APGR

P

Front Fill

GR

S

Floor Sub Array

GR

Side Arrays

System:

V-Series

Mounting:

flown

No. of cabinets:

4

Amplifier:

D80

Position x:

3.00 ft

Position y:

22.00 ft

Frame height front (z):

22.50 ft

Hor. aiming:

8.00 °

Frame angle:

-8.00 °

Delay (abs.):

0.3 ms

ArrayProcessing

ArrayProcessing

AP slot:

1: Bypass

TOPs

CUT

CPL:

0

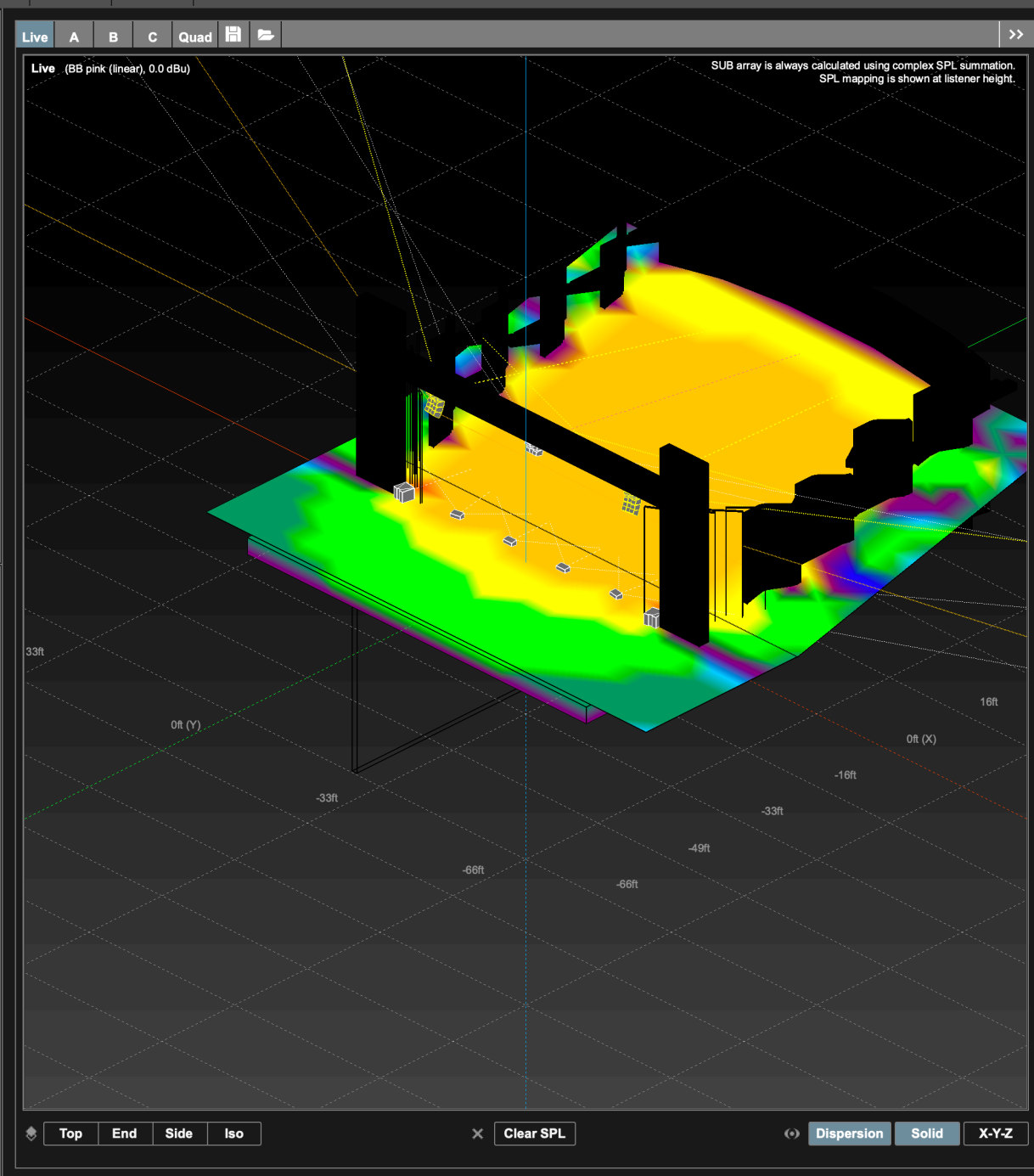
Level (rel.):

Cabinets

Relative

+

	GR	Link	Speaker	Setup	Level dB	HFC	Splay	Abs.
1			V12	Arc	4.0		0.0 °	-8.0 °
2			V12	Arc	4.0		4.0 °	-12.0 °
3			V12	Arc	-4.0		8.0 °	-20.0 °
4			V12	Arc	-4.0		10.0 °	-30.0 °



Color

144dB

132dB

120dB

108dB

96dB

84dB

72dB

60dB

48dB

36dB

Highest SPL

-

+

3

6

dB per division

Signal selection

Level (dBU):

0.0

Frequency:

Broadband Pink noise

Weighting:

dB linear

Interferences (<= 163 Hz)

SPL calculation

Resolution:

Mid (7ft)

Highest SPL:

112.8 dB

100%

Autocalculate

Recalculate